

PLAST-AX

GET THE EDGE

3-4
ALLIANCE
SMITHFIELD

5-10

11-12

13-14

15-16

POINT OF DIFFERENCE

600 & 1100L
(WITHOUT POCKETS)

REL BINS ACCESSORIES

1100L BIN SIZE GUIDE

660L BINS SIZE GUIDE

REAR LOAD BINS WITHOUT POCKETS

AN EXTRACT FROM THE BIN BOOK
AU & NZ EDITION 2

**BIN & LID SOLUTIONS
SPECIALIST SUPPLIER TO INDUSTRY**

HDPE COMPARISON - 660L / 1100L (WHEELIE BIN PLASTIC)

Rear Load 660 / 1100L

Reliably Trusted To Deliver: An Edge In Your Operations & In The Market.
The Foremost Cost-Benefit Bins & Lids with Sustainable End of Life Recycling Results.



Best Price vs Expected Lifespan
25mm Thick Top Rim
Sturdy Repairable Material = Long Lifespan



Bin / Lid / Hinge = Flex & Non-Crack Design
Contained / Audit Pass
Operational Ease = No Complaints



Flexible Material = Survives Mis-use
Handles Sun Exposure = Endures Impacts
Happy Customers = Prosperity



Pro Aesthetics = Positive Visual Impact
Enduring Appeal = Value
YOUR CLIENT - YOUR BRAND - MATTERS

The problems we solve.



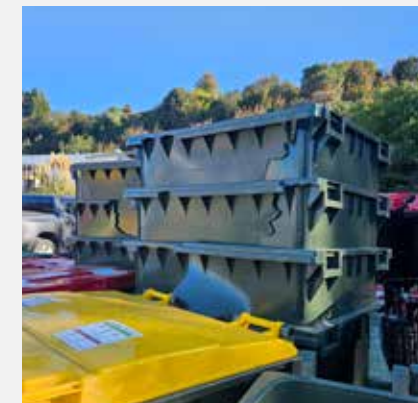
Thin top rim = Irreparable Damages
Unrecoverable costs / Health & Safety Risk



Bin + Lid = Hinge System Failure
Sharp Edges / Customer Complaints



Sun Exposure Damage = Brittle Material
Colour Fade & Impact Breakage



Unightly Aesthetics = Visual Detractor on Property
Brand Aversion / Uncontained Rubbish
Audit Failure

Stay with PLAST-AX and Prosper

REAR LOAD BINS (no pockets)

The PLAST-AX 660L & 1100L Waste Bins are also available as rear load only bins, without front load pockets.

660L

Fill Height: 933 mm + 160 mm
with castors

Weight Rating: 265 kg

Comes with a PLAST-AX single-piece lid.

1100L

Capacity: 1100 Litres

Fill Height: 1033 mm + 160 mm
with castors

Weight Rating: 440 kg

Comes with a PLAST-AX Single piece lid.
Available with castor wheels and fixings.



Imaged: PLAST-AX 660L
For rear load only (no pockets)
with custom red bin and red lids.



PLAST-AX
660 & 1100L



PLAST-AX 660S & 1100S

Our customers are proving the benefits of the sturdy, repairable material and the 25mm Top Rim.

Our more-flexible material survives mis-use far more than the brittle wheelie bin plastic alternatives.

This also means it can handle sun exposure and endures impacts more readily.



PLAST-AX
660 & 1100L



PLAST-AX 660S & 1100S

We've taken our strong front load Bin, Lid & Hinge Solution, with all its flexibility and a non-crack design, and brought this to the rear load market too.

Your bins go to your customers;
It's your brand, and it matters.

Improve everything:
Get operational ease *and* enduring
appeal – that's value.



ONE-PIECE LID

The one-piece lid hangs down directly with no pressure on the hinges at any point, significantly reducing any chances of damage.

As imaged, this allows for the bin to be pushed up flush against a wall with the lid open.



FITTING WHEELS

Fully moulded feet are an integral part of the bin design.

Wheel fitting is a one-man job from the outside of the bin, self tapping M8 coach screws directly into preformed cones.

From the inside this means you have no protruding fixing heads: a smooth interior complete with moulded drainage bung.



REAR LOAD TOP RIM

The PLAST-AX box section is formed to accommodate a rear lift comb.

It is gusseted back to the main bin wall in a single moulded section.

This gives the whole bin structural rigidity and allows for a full weight lift without any risk of snapping the front lip off (which is what plagues other non-PLAST-AX 1100L MGBs)

The top rim proves a convenient hook point for FEL forks to manoeuvre the bins if required.



